

*Stimulant for soil fertility*

**Foliar and Soil application**

For Pasture, Cropping, Vegetables Orchard & Vine use

## King Kelp



- ✓ **promotes cell density, stress & disease resistance, root growth, nutrient absorption and mineral balance in plants**

Trace Elements	-in excess of 55 (chelated)
Plant Growth Regulators	-including Cytokines & Auxins
Alginates	-aids disease resistance
Sugars & Starches	-chelating agent/frost & heat resistance
Phenolic Compounds	-stimulates root growth/disease resistance
Mannitol	-promotes foliar absorption
Lamarin	-aids disease resistance
Amino Acids	-contains 21
Vitamins	-contains 12
Natural Antibiotics	-believed to be related to stress reduction
Betaines	-aids frost tolerance

**A natural catalyst for stimulating plant and microbe activity in the soil.**

**King Kelp Liquid contains a rich assortment of growth substances**

### The effects of kelp are especially notable on plants under stress

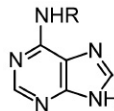
Kelp in itself will not generally produce rapid plant growth. Rather it will produce strong robust hardy plants of remarkably even size, strength and vigour.

Kelp is extremely useful for promoting good flowering and fruiting, with excellent colour and even size characteristics.

Kelp is best used a little, often, as a foliar feed to gain optimum results. However large soil applications are exceptionally good for germination and strong root development.

### Advantages of using Kelp:

- beneficial for seed germination
- improved protein levels
- improved heat / frost stress resistance



**Cytokinins** – natural plant growth regulator

Mode of action: Cytokinins are a group of plant regulators naturally found in some kelps which, promote cell division and leaf expansion, stimulate the growth of lateral buds and retard leaf ageing. Kelps are often used on flowering and fruiting plants to enhance bud set, and fruit development.

King Kelp contains rich natural levels of cytokinins, plus has an abundance of trace and rare earth nutrients. These have been found to improve Flesh Density, Skin quality, and can impact favorably on fruit colouration when used in hand with good vine / orchard management

King Kelp is best used frequently at low rates throughout the growth season from flowering, through sizeing, till fruit maturation. *Frequent exposure is more important than single big hit applications.*

### **In addition, plant growth regulators assist in:**

- promoting even size, colour & fruit density
- strengthening natural defences
- strong cell division and structure
- promoting protein synthesis
- delaying fruit crop / retarded leaf ageing

General Application: 7Lt/Ha

Best Applied in small frequent foliar doses on fruiting plants 3-4Lt/Ha

*Specific rates and handling instructions available on request.*